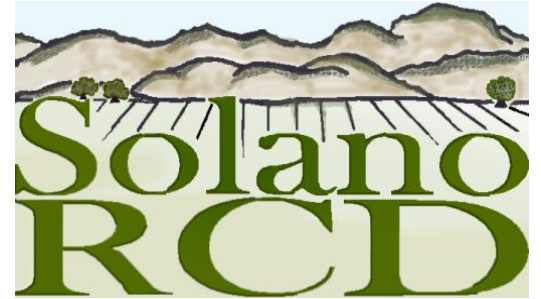


CARCD 72nd Annual Conference
“Dynamic Partnerships, Relevant Results”
November 2017 – Sacramento, CA



RESOURCE
CONSERVATION DISTRICTS

Partnership Mechanics: Assembling great projects



Chris Rose¹ and Wendy Rash²
¹Solano Resource Conservation District,
²USDA Natural Resources Conservation Service

2017/05/06



Natural Resources Conservation Service

- An agency of the United States Department of Agriculture
 - The only Federal agency that does voluntary conservation with private landowners
- Formed during the Dust Bowl to conserve soil
- Provides technical and financial assistance to:
Farmers, Ranchers, and Forest Managers

Financial Assistance

- Farm Bill funding
 - EQIP
 - Easements
- Assistance provided directly to agricultural producer

Technical Assistance

- Technical expertise: soils, water, animals, plants, air, and energy.
- Context: Working lands
 - Protect and improve natural resources.
 - Create, maintain or improve habitat.

Who is the Solano RCD?

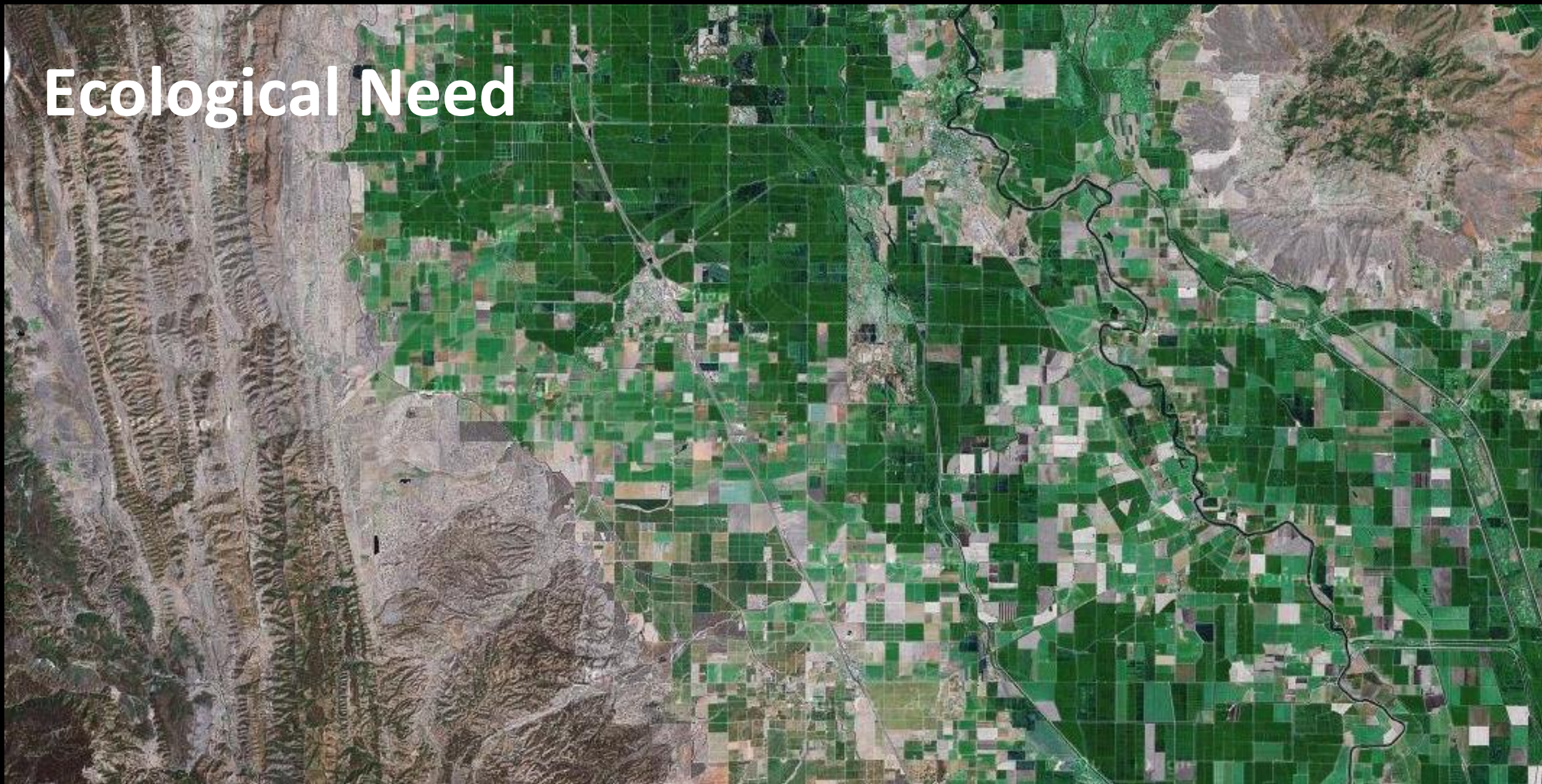
- Local Government District formed in 1956 to address drainage and resource conservation issues in the Ulatis Creek Watershed. Formerly Ulatis RCD.
- SRCD is a non-regulatory public agency tasked with providing conservation services within its boundaries using public funds and outside of its boundaries under specified contract.



Partnership between NRCS and Conservation Districts

NRCS formed as a partnership with local conservation districts
Local input is critical to achieving NRCS mission
Local working relationships in Solano County

Ecological Need







What do we need to make this happen?

WHERE: willing landowners or operators, impactful landscapes, meaningful footprint

WHO: Biologists, ecologists, technicians, agronomists, engineers, conservationists, producers, regulators, volunteers

Aligned objectives: Landowner, conservation agencies, regulatory agencies

Resources: Funding, time, equipment

KNOW-HOW: experience in our landscapes, detailed expertise, template for success

How do we put together these large multi-benefit projects?

Incentives from single source are often not enough on their own

NRCS and RCD staff have complementary skill sets for providing the technical plans

Cooperators have LAND, equipment and labor to contribute to project

RCD has access to different funding sources with aligned goals

Processes for compliance with Federal and State laws can be streamlined for landowners working with us

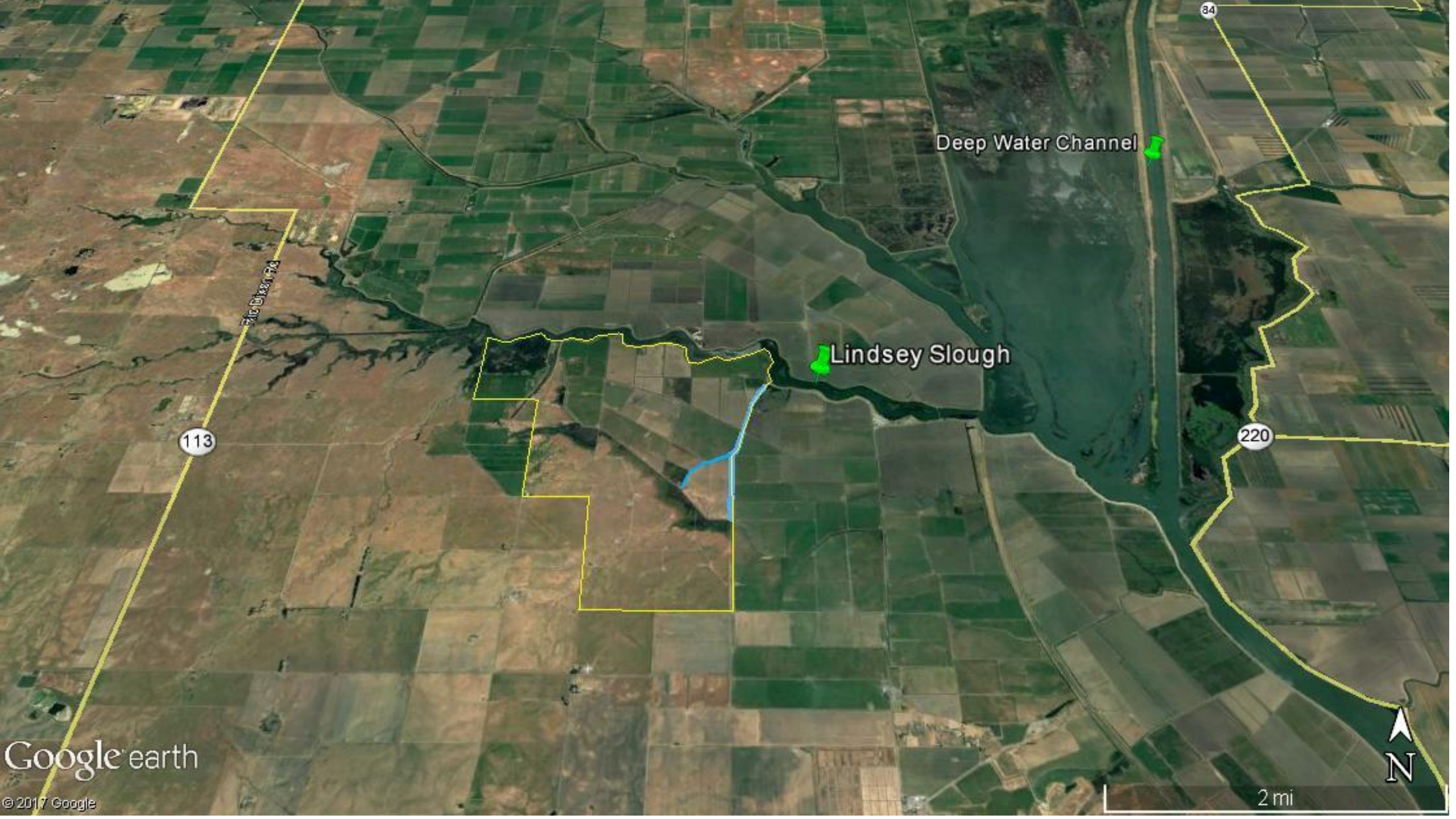
Petersen Ranch Case Study

- Riparian areas and drain canals adjacent to large delta waterway
- Cattle drinking from waterways
- Erosion from cattle trails
- Water quality concerns from manure, pathogens, excess nutrients
- Lack of habitat in managed pasture/farmed fields



Petersen Ranch Case Study





Deep Water Channel

Lindsey Slough

113

220

84

Google earth

© 2017 Google

2 mi



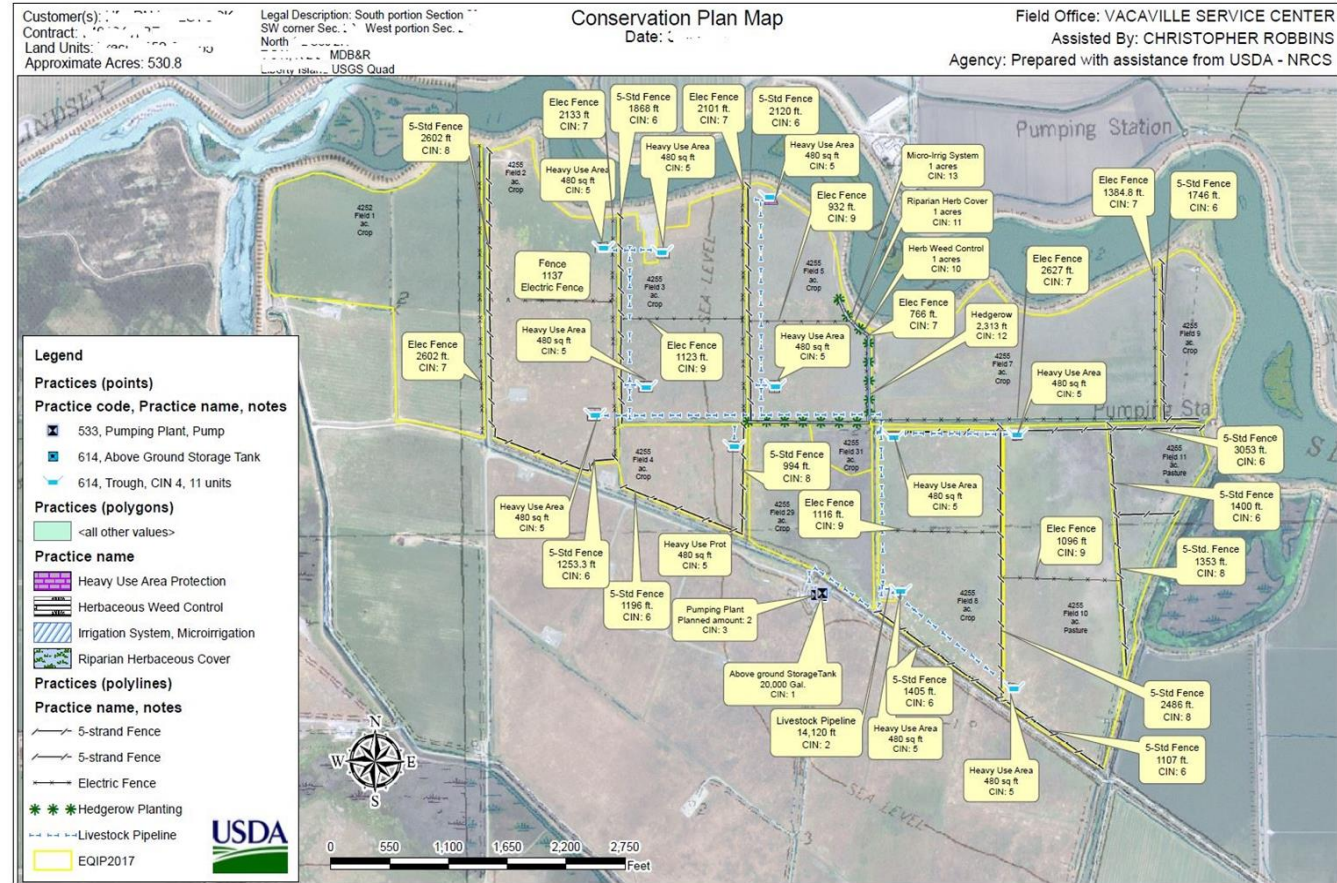
Work w/ NRCS and Landowner to draw up plans, budget, and then secure cost-share...

- CA Dept. of Water Resources, Delta Ecosystem Enhancement
- Sacramento-San Joaquin Delta Conservancy
- Wildlife Conservation Board



Petersen Ranch Case Study

- Large scale project
 - 22 water troughs
 - 35,000 gallons water storage
 - 24,000 feet of pipelines
 - 25 acres of seed and plug planting
 - 34,000 feet of tree and shrub establishment
 - 52,661 ft. of fencing
- Total cost \$XXX,XXX (expensive)
- NRCS financial incentive covers ~5











SLEWS-Dixon H.S.

Student and
Landowner
Education
and
Watershed
Stewardship
Program







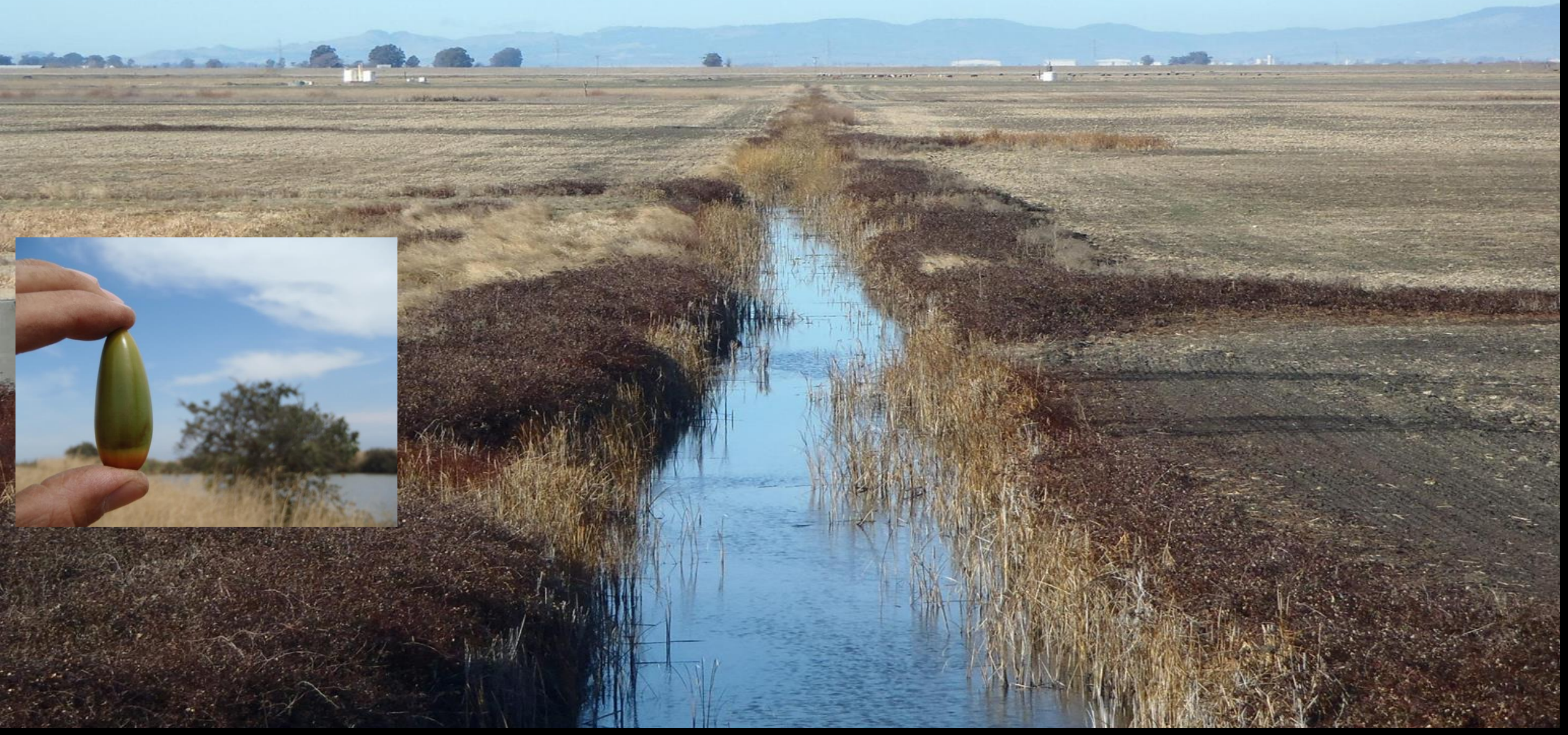
2015/06/08



2015/08/19

2017/05/08

Working Waterways...





Wendy Rash, USDA-NRCS 707.448.0106

Chris Rose, SRCD: 707.678.1655