

CARCD 72<sup>nd</sup> Annual Conference

“Dynamic Partnerships, Relevant Results”

November 2017 – Sacramento, CA



# *SGMA at Ground Level*

CALIFORNIA



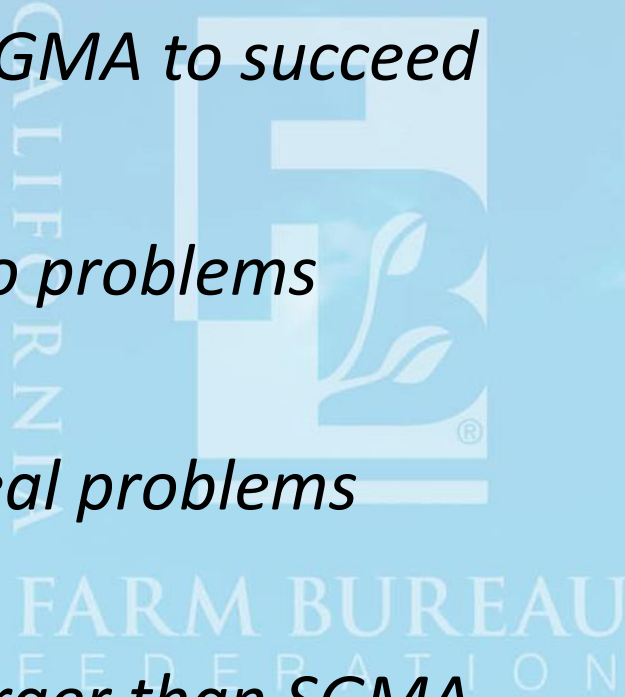
FARM BUREAU  
FEDERATION

Jack L Rice  
Associate Counsel  
California Farm Bureau Federation  
O: (916) 561-5667  
M: (916) 804-7423  
[jrice@cfbf.com](mailto:jrice@cfbf.com)



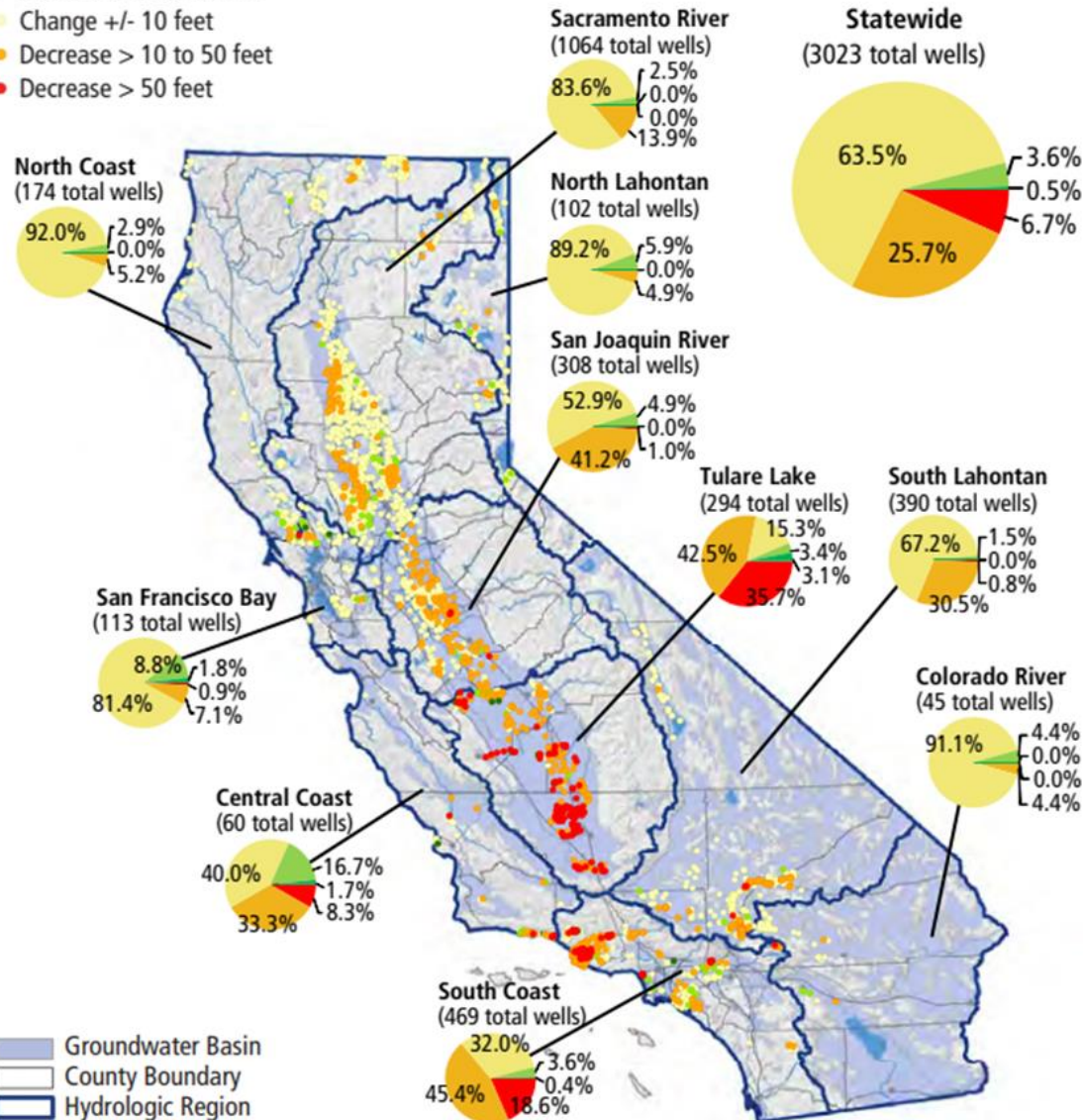
# What SGMA Means

- *Farmers want SGMA to succeed*
- *Some areas = no problems*
- *Some areas = real problems*
- *Solutions are larger than SGMA*



# Groundwater Level Change - Spring 2011 to Spring 2017

- Increase > 50 feet
- Increase > 10 to 50 feet
- Change +/- 10 feet
- Decrease > 10 to 50 feet
- Decrease > 50 feet



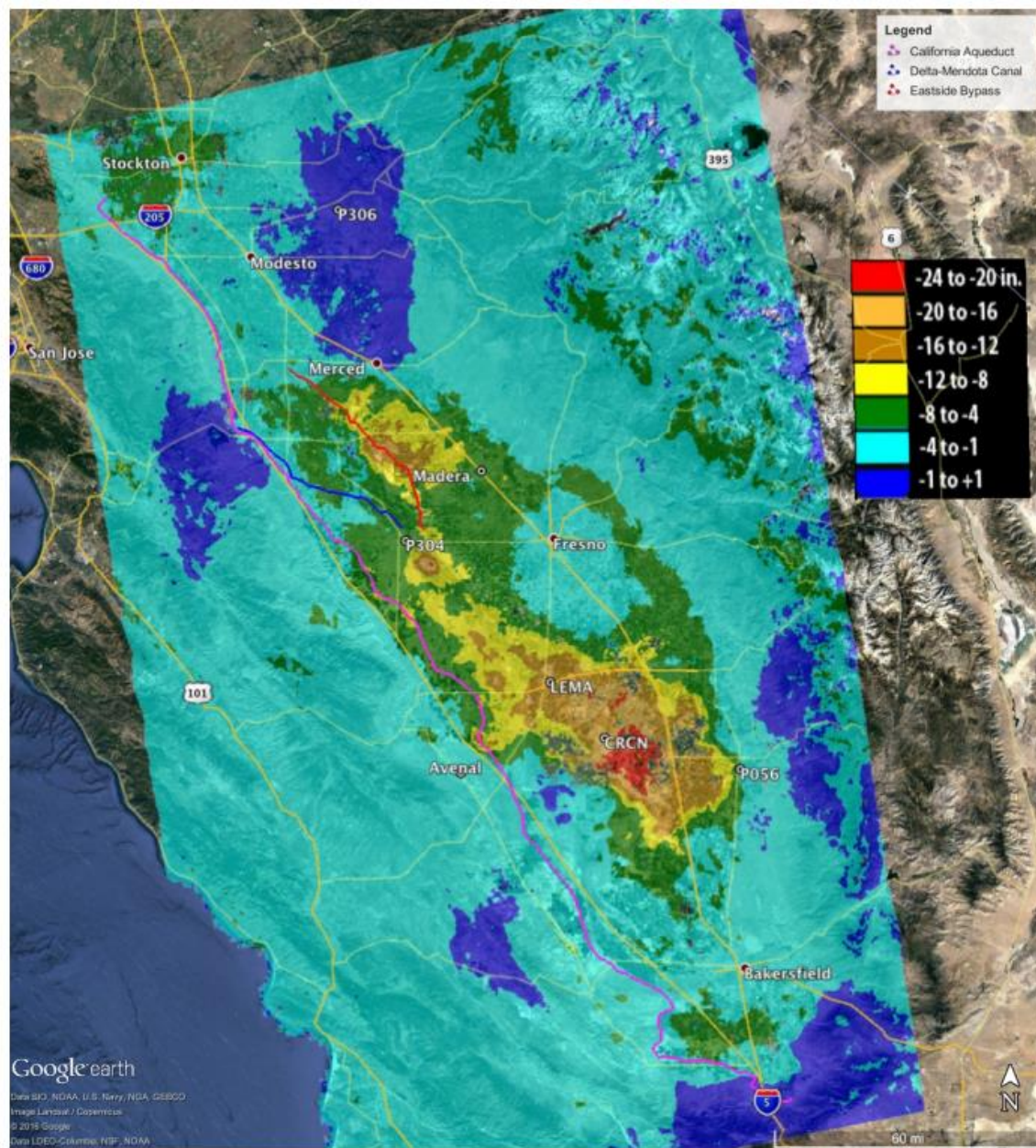


Figure 1. Total subsidence in the San Joaquin Valley for the period May 7, 2015 – Sept. 10, 2016 as measured by ESA’s Sentinel-1A and processed at JPL. Two large subsidence bowls are evident centered on Corcoran and SE of El Nido with a small, new feature between them, near Tranquility. An arm of the large Corcoran bowl also extends to the California aqueduct near Avenal.

# What the farmer thinks of SGMA

- Another issue...
  - Another cost...
  - Another regulation...
- = More uncertainty...

CALIFORNIA



FARM BUREAU  
FEDERATION

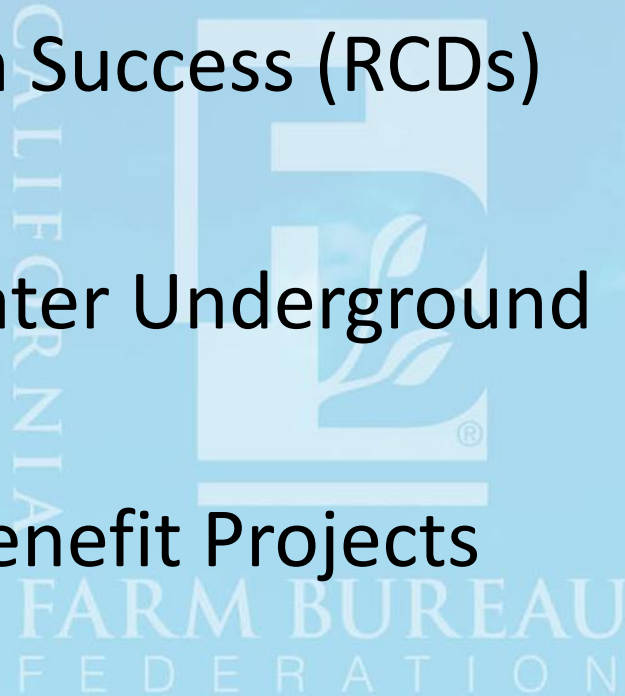
# Obstacles to Success

1. Conflict - old, new & unrelated
2. Conflicting Regulations
3. Practices

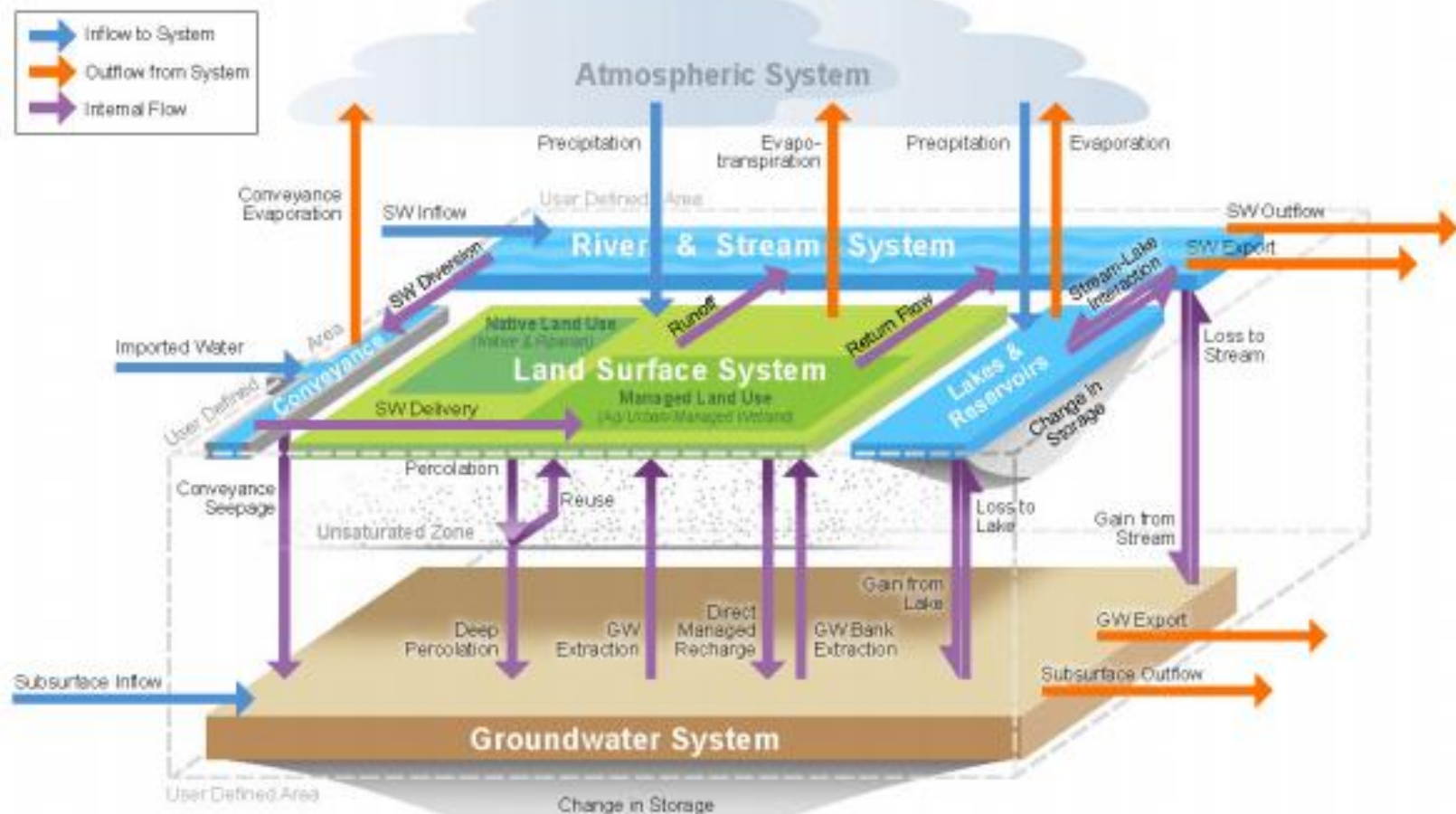


# Opportunities for Success

1. Building on Success (RCDs)
2. Getting Water Underground
3. Multiple Benefit Projects
4. New Practices







**Figure 7 – Water Budget Schematic Showing the Interrelationships among Potential Water Budget Components and the Water Systems that Comprise the Hydrologic Cycle**

# Getting Water Underground

## 3 Approaches

- Groundwater Banking
- Groundwater Recharge/Replenishment
- Slow Water

CALIFORNIA



FARM BUREAU  
FEDERATION

*THANK YOU!*

CALIFORNIA



FARM BUREAU  
FEDERATION

Jack L Rice  
Associate Counsel  
California Farm Bureau Federation  
O: (916) 561-5667  
M: (916) 804-7423  
[jrice@cfbf.com](mailto:jrice@cfbf.com)

