

CARCD 72nd Annual Conference
“Dynamic Partnerships, Relevant Results”
November 2017 – Sacramento, CA



RESOURCE

CONSERVATION DISTRICTS



Helping ranchers build profits
on healthy grasslands

It is not the strongest of the species that survives, nor the most intelligent. It is the one that is most **adaptable to change**.

-Charles Darwin



GRAZING PLAN 2011



Ranchers need better tools

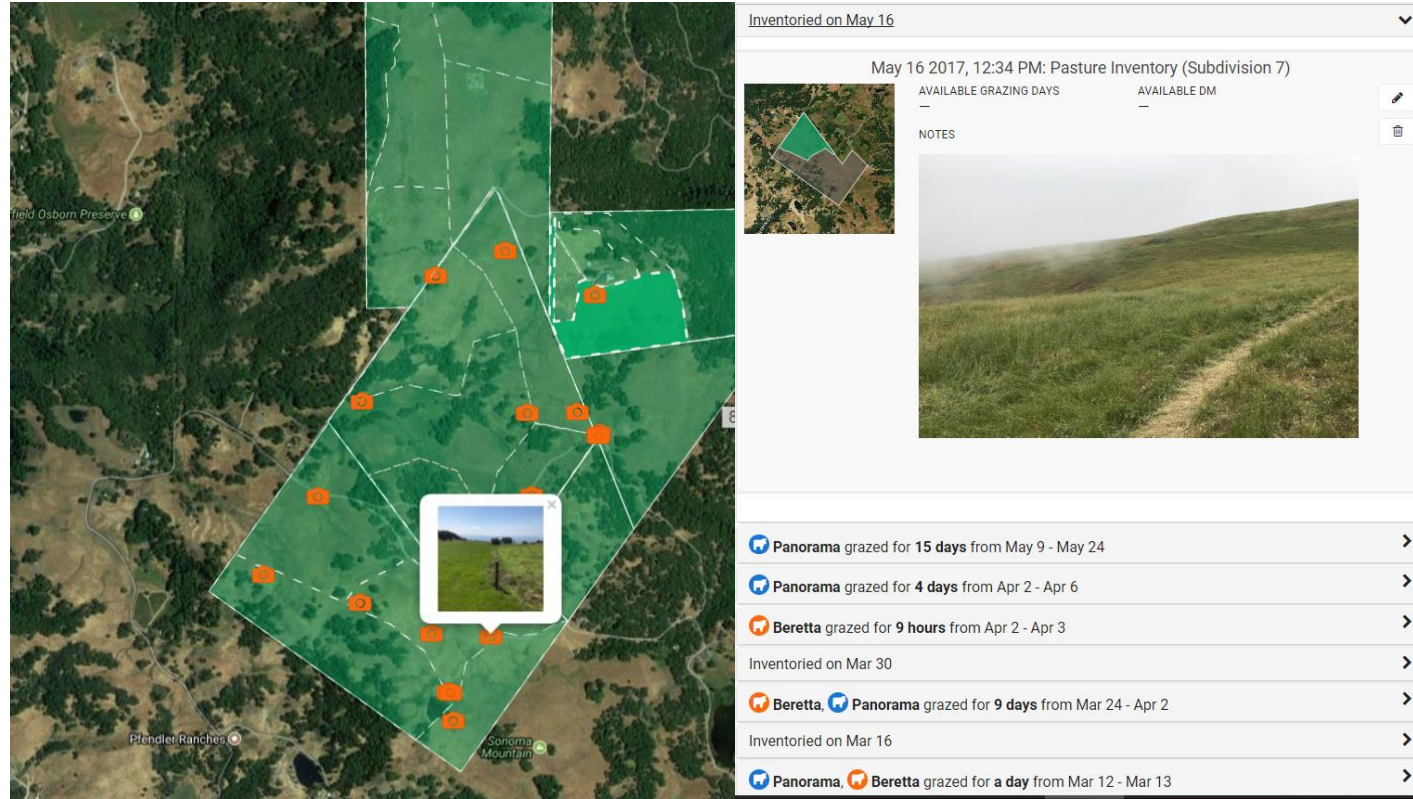
Knowledge is
portable



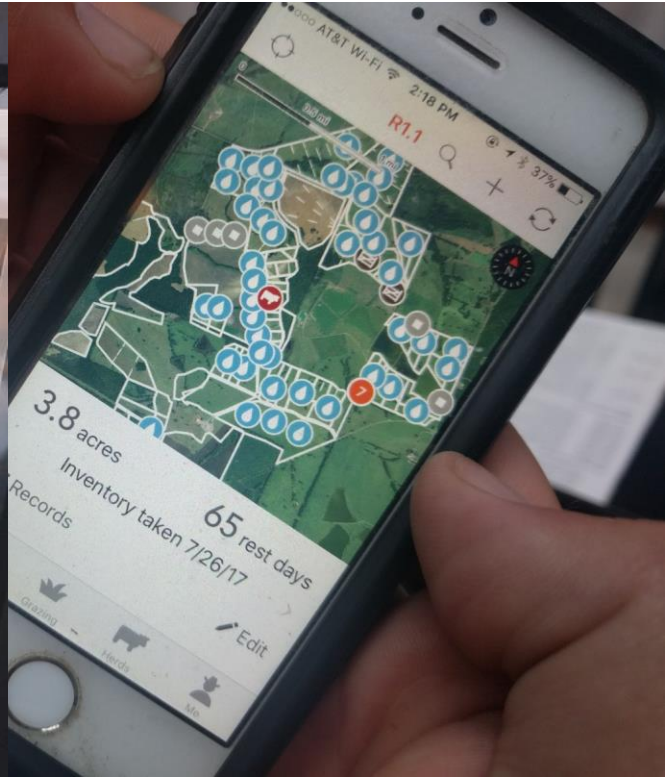
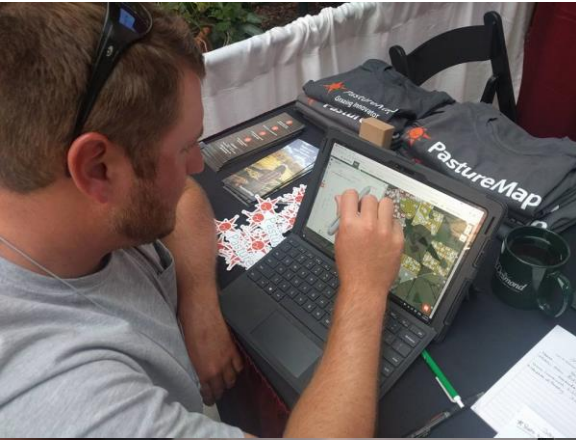
Enabling mobility of professional graziers

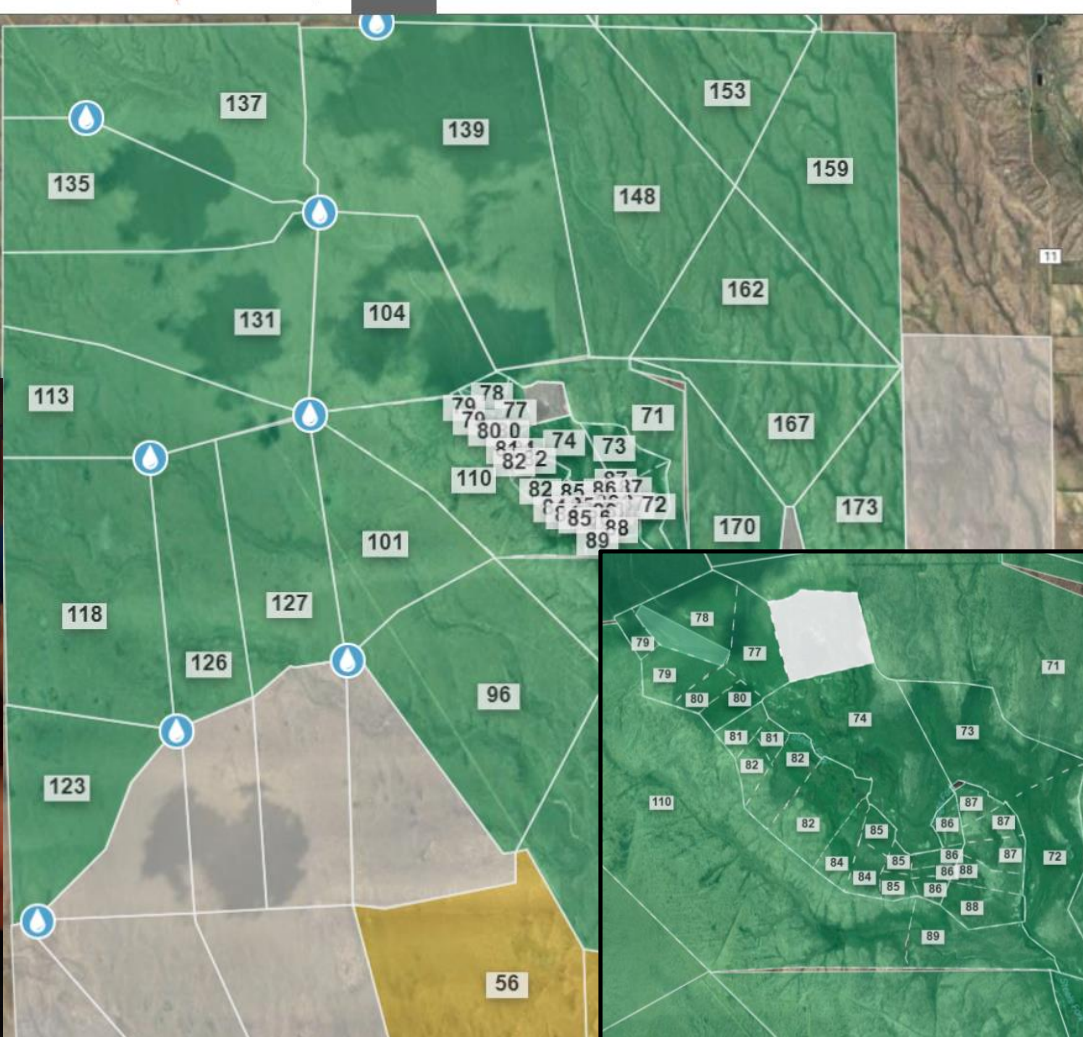
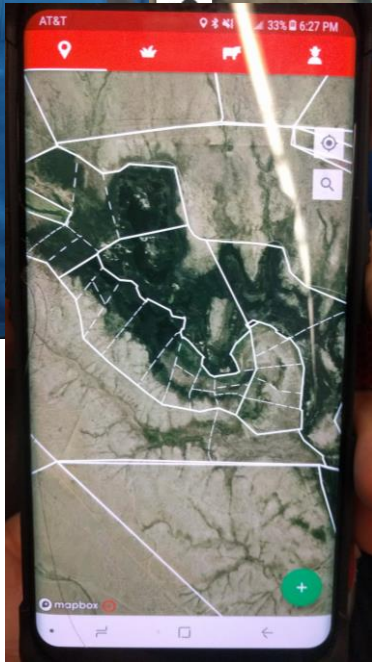
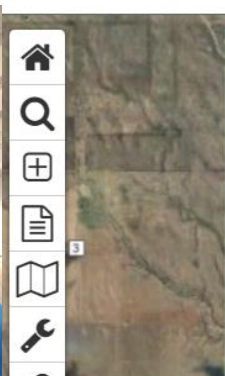
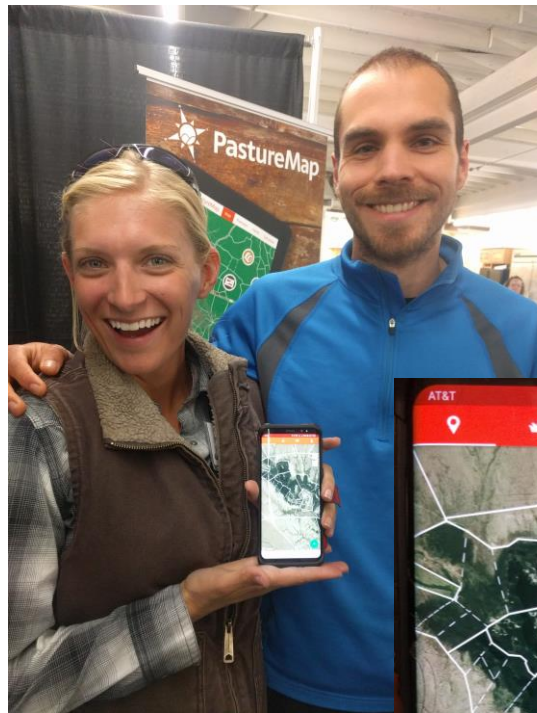


Learning the landscape without 40 years of knowledge



Helping knowledge scale to new minds





Freeing time for higher value work



“Joe can plan out the moves for all 3 properties so we can all see the plan without driving half an hour to HQ.

I can mark out where valves are, or where the tree is down on the fence, and teammates can find it on their phone.

I don't have to drive out to watch high schoolers spend 6 hours digging for the pipeline.”
- Senior ranch staff



Helping farmers tell their story



Move 2017 Pigs

Tap a destination pasture for 2017 Pigs.

An aerial satellite-style map of a farm with several rectangular paddocks outlined in white. A thick red line traces a path through the paddocks. Two circular markers are placed on the path: one is red with a white pig icon, and the other is orange with a white pig icon.

nettlevalleyfarm • Follow
Nettle Valley Farm

nettlevalleyfarm 19 paddocks and counting! I love using #pasturemap to track moves, organize my observations and take photo inventories of pasture regrowth. #beginningfarmer #driftless #pasturedpigs #knowyourfarmer #farmer

jtodac This is very cool!!
haykessel Ahhh thank u for this!!

femmedelafowl @vueduolcanfarm
thepigproject17 Thanks for the tip! Just downloaded it! #newfarminggoals

liv.sulerud I love getting to witness a tiny bit of your brilliant farming brain. 🌱📷

nettlevalleyfarm @liv.sulerud what a nice thing to say. 🥰👍👤

carversvillefarmfoundation Do you have

62 likes

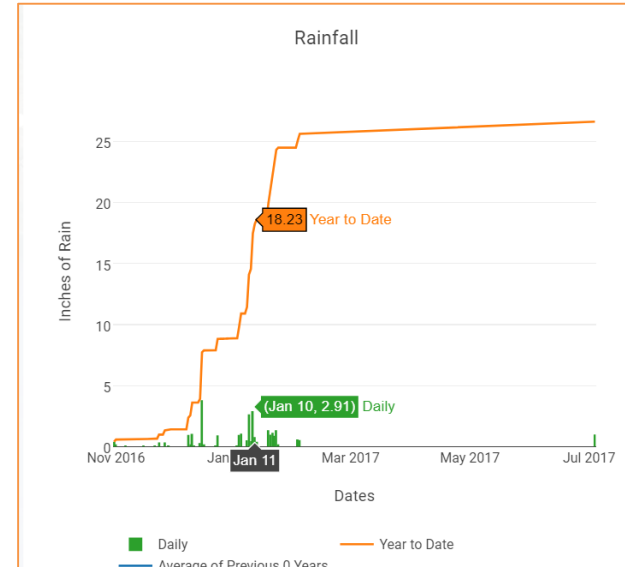
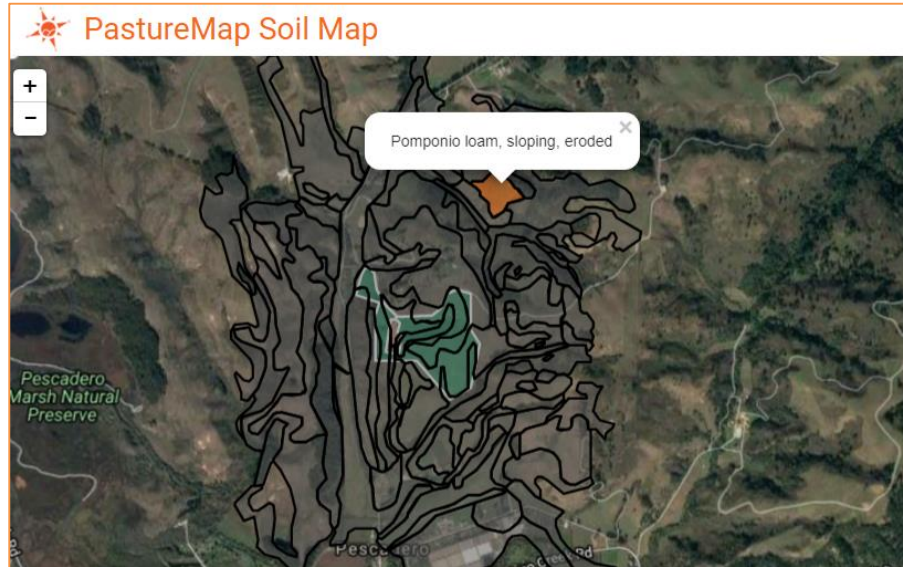
ADD COMMENT

Add a comment...

Enable consistency and differentiation

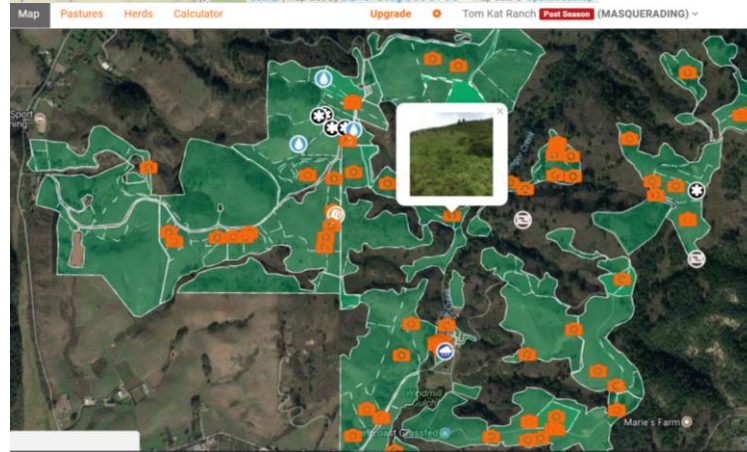
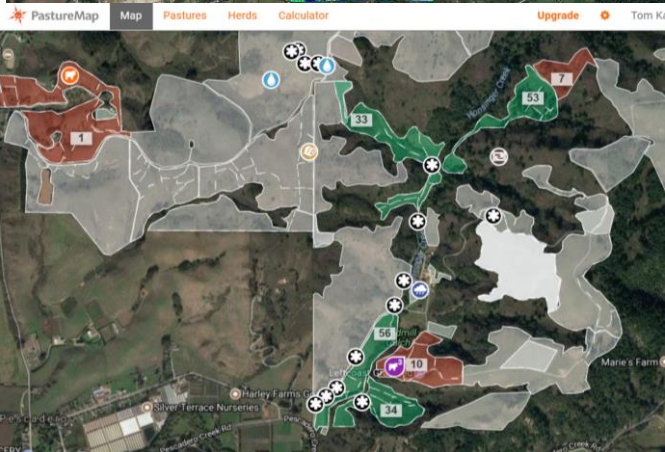
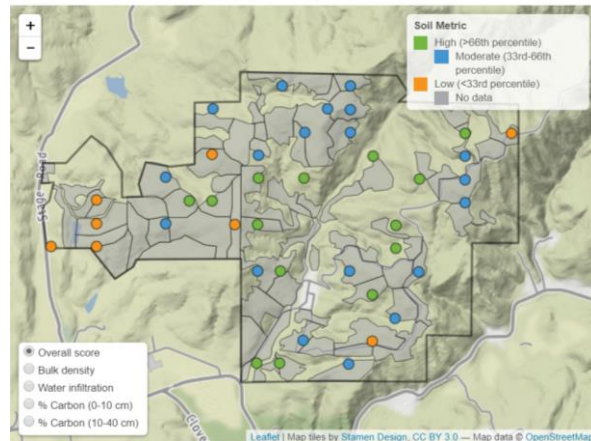
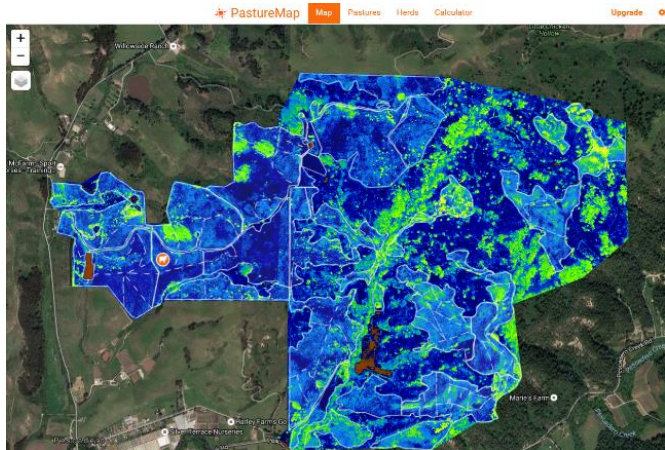


Network insights: Soil like mine, climate like mine



What types of animals might do well?
How are similar operations doing it?

Tell a soil regenerating story with data backup



Why isn't beef more like wine? Terroir and breed variation not marketed



Finished on volcanic range native grasses on Idaho Snake River Canyon

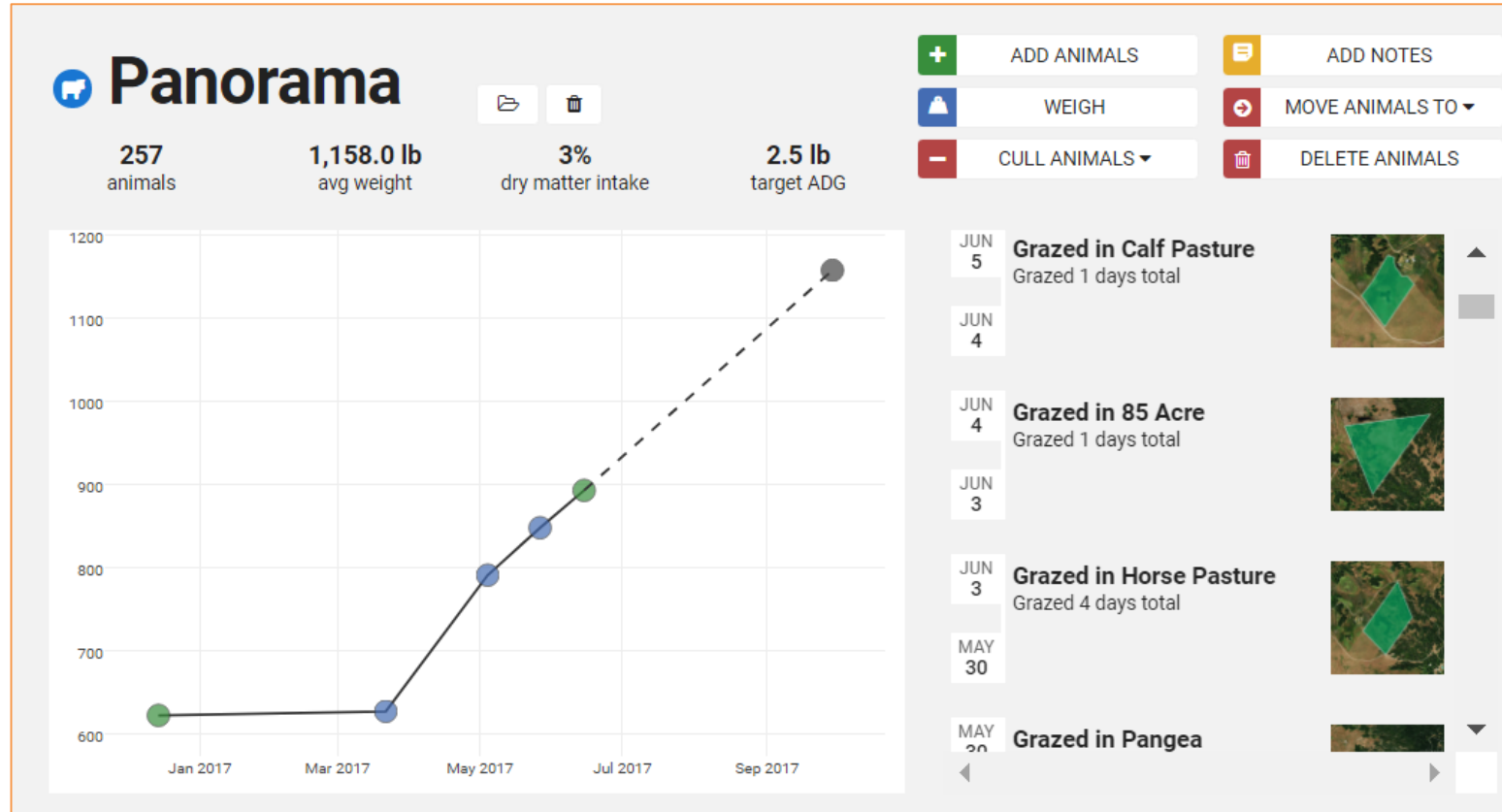


Belted Galloways bred for coastal fog cliffs eating perennial saltgrass in CA

CA: high mountain country vs fruit and wine country vs brittle dryland, different soils and seasons

Finishing on different forages – achieve consistent quality but make flavor variation a strength?

Understand carcass variability



Lifetime animal traceability

Live Animals IN PANORAMA

+ ADD ANIMALS ADD NOTES WEIGH MOVE ANIMALS CULL ANIMALS DELETE ANIMALS

Animal ID	Birthdate	DMI (% of body weight)	Current DMI (lb)	Target ADG (lb)	Last Weigh Date	Last Weight (lb)	Current Weight (lb)
Animal 4		3%	34.7	2.5	May 26 2017	848.0	1,158.0
Animal 5		3%	34.7	2.5	May 26 2017	848.0	1,158.0

RECORDS

- Jun 14, 2017 Moved to herd Panorama
- May 26, 2017 Weighed 848.0 lb
- May 04, 2017 Weighed 791.0 lb
- Mar 21, 2017 Weighed 627.0 lb
- Dec 14, 2016 Added to herd Panorama

257 animals in herd

Culled Animals IN PANORAMA

ADD NOTES WEIGH DELETE ANIMALS

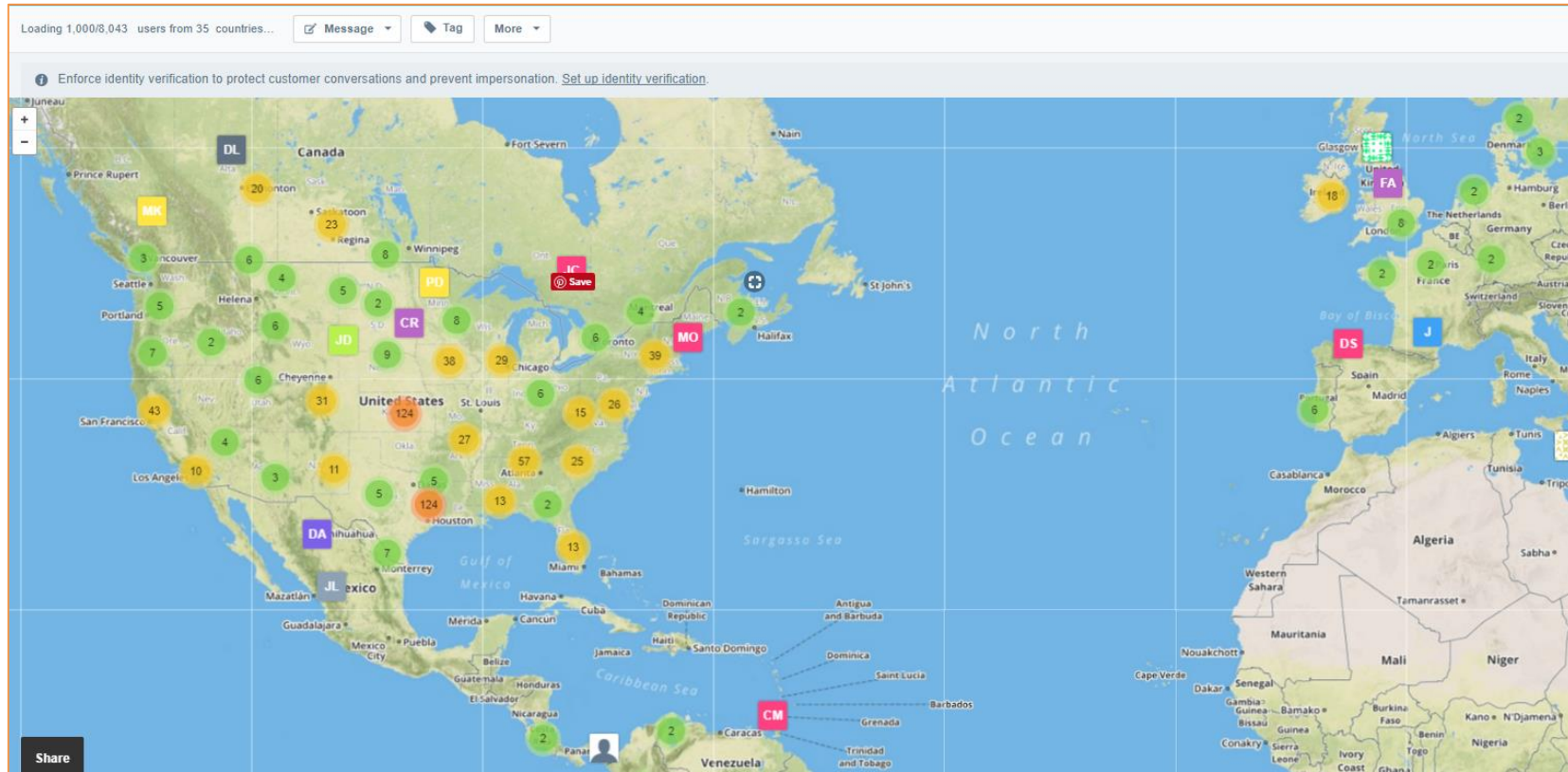
Animal ID	Birthdate	Starting Weight (lb)	Start Weigh Date	Last Weight (lb)	Status	Cull Date
-----------	-----------	----------------------	------------------	------------------	--------	-----------

Carcass weight, quality grade tied to grazing records

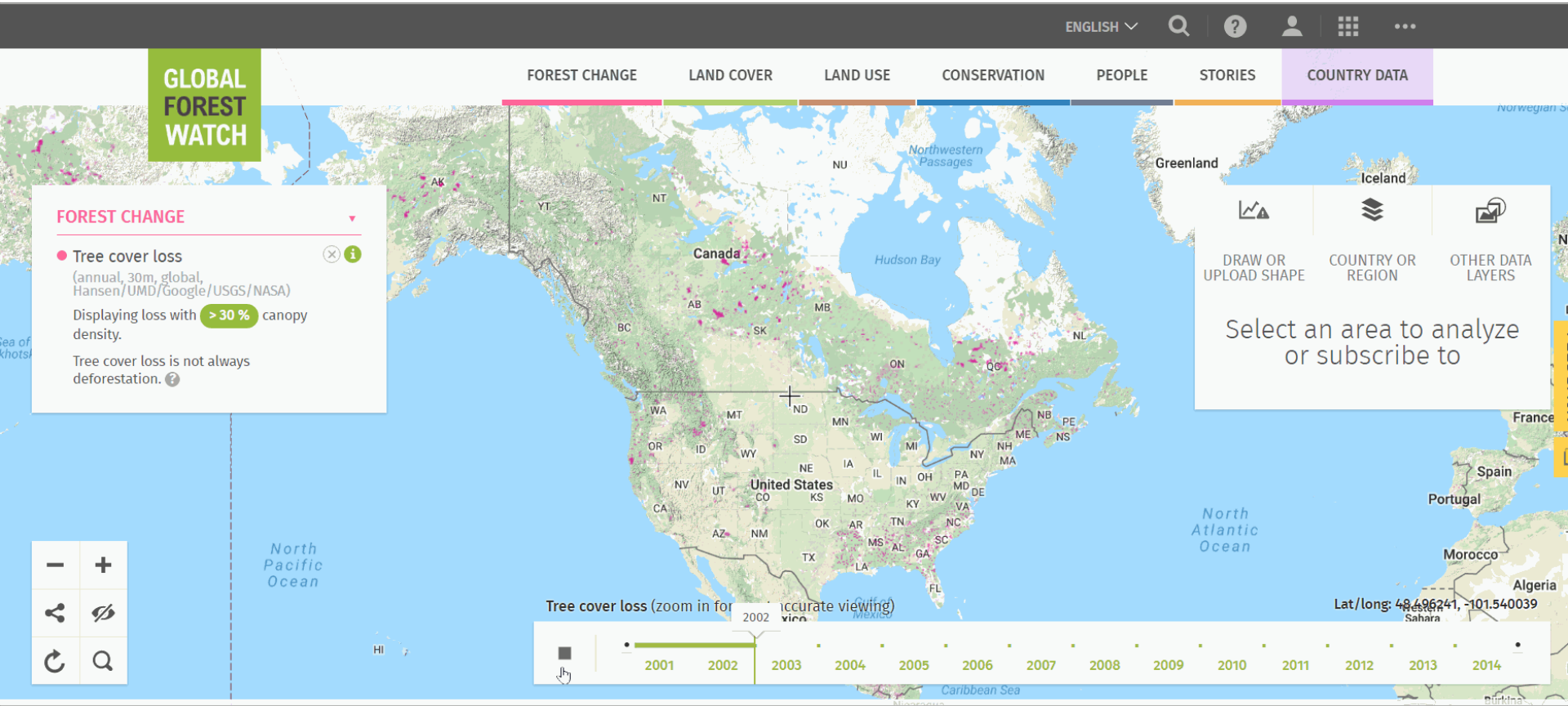
Improve consistency of quality but enable product differentiation

8000 graziers in 38 countries

What can we learn from each other?



Layered data: Soil health, ground cover, biodiversity, grazing management



What to do with all the free time?



Eliminate and regenerate work



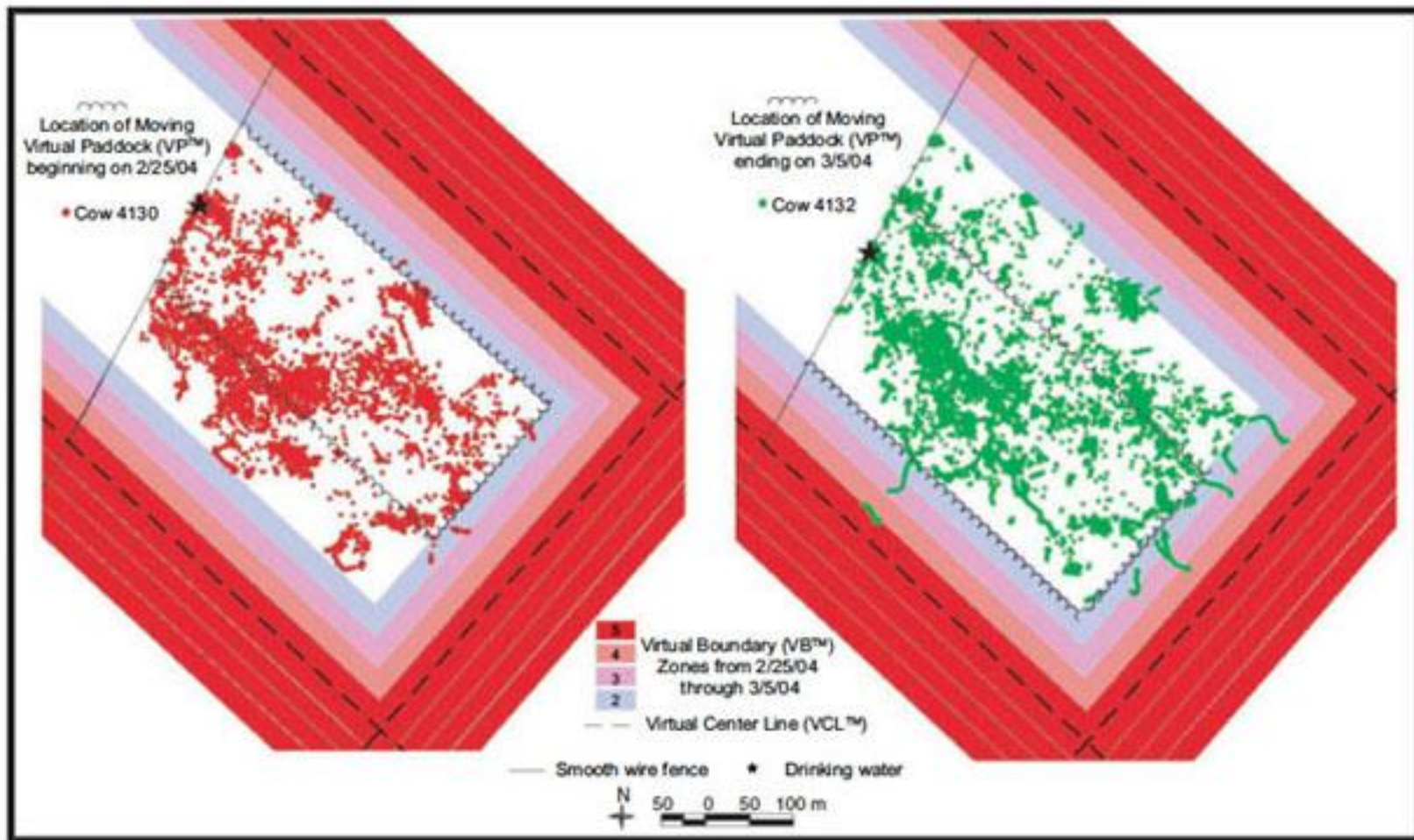
THE CALIFORNIA REPORT

Poop-Powered Electric Feed Truck Debuts at Northern California Creamery



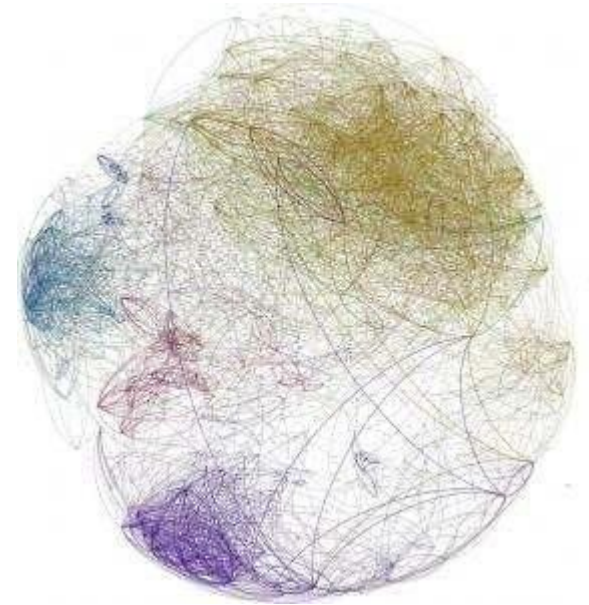
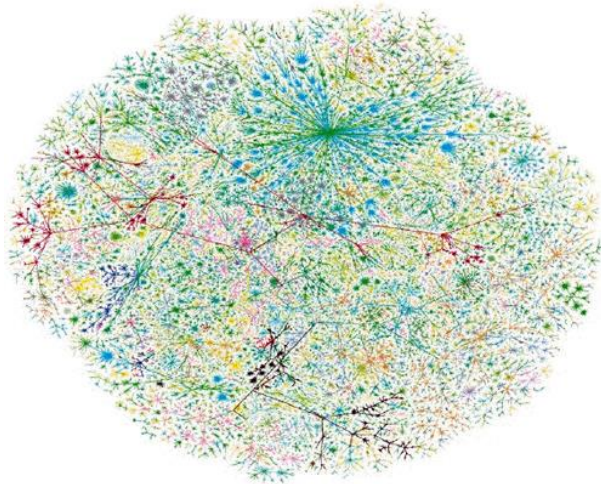
By Tiffany Camhi
AUGUST 11, 2017





Dean M. Anderson, USDA-ARS

Could AI help us manage complex ecosystems?



A wide, flat field of tall green grass under a blue sky with large, white, fluffy clouds. The grass is dense and reaches up to the horizon. The sky is filled with large, white, fluffy clouds that are scattered across a bright blue background. The horizon is a straight line in the distance, with some faint structures or trees visible. The overall scene is a vast, open landscape.

The earth is alive, we're just starting to hear it



Empower the next generation.
christine@pasturemap.com